

shed project

The Knollview HPM-1307

One in a series of
project plans from



homestore™
plans and publications

Project Plan Index

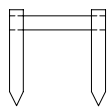
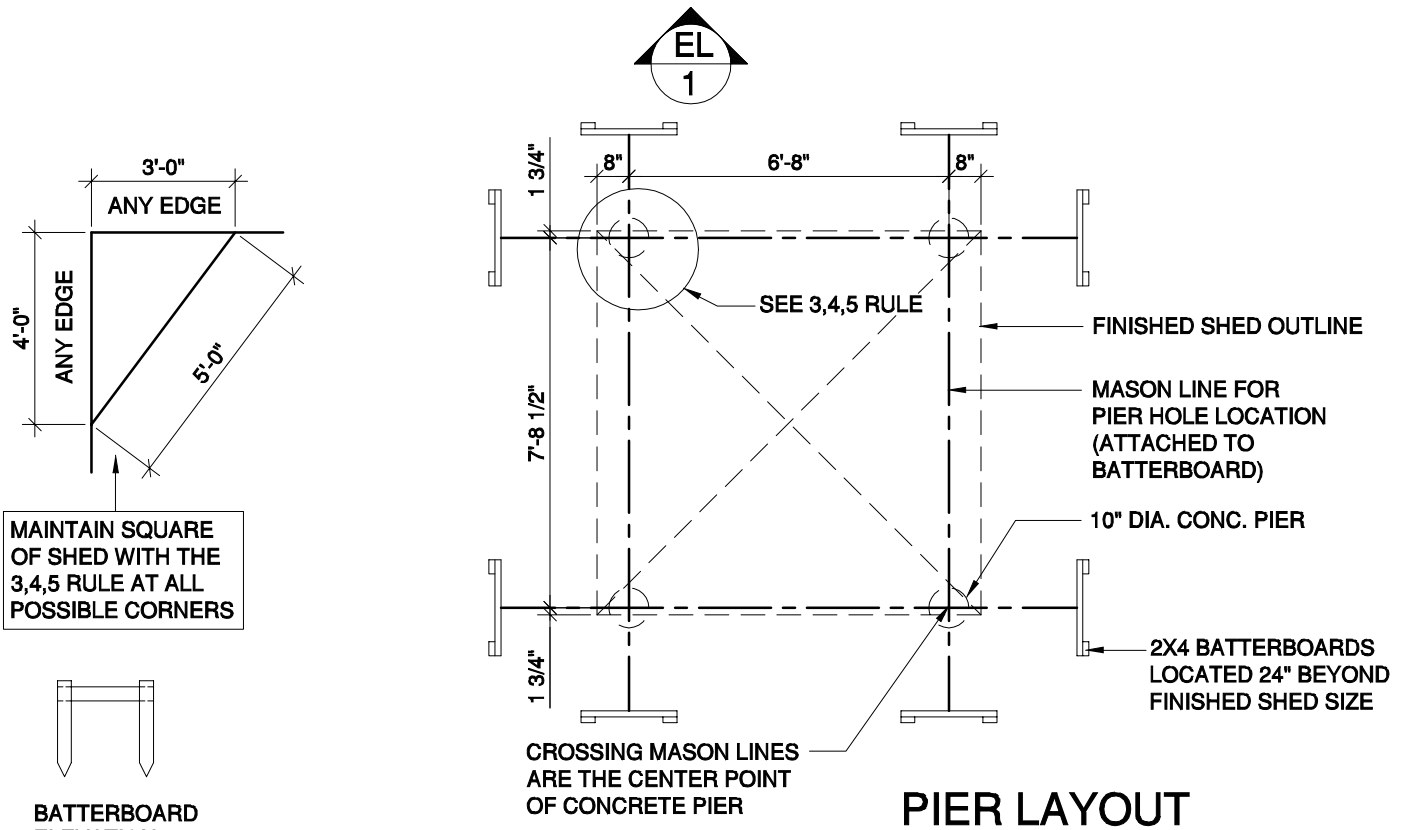
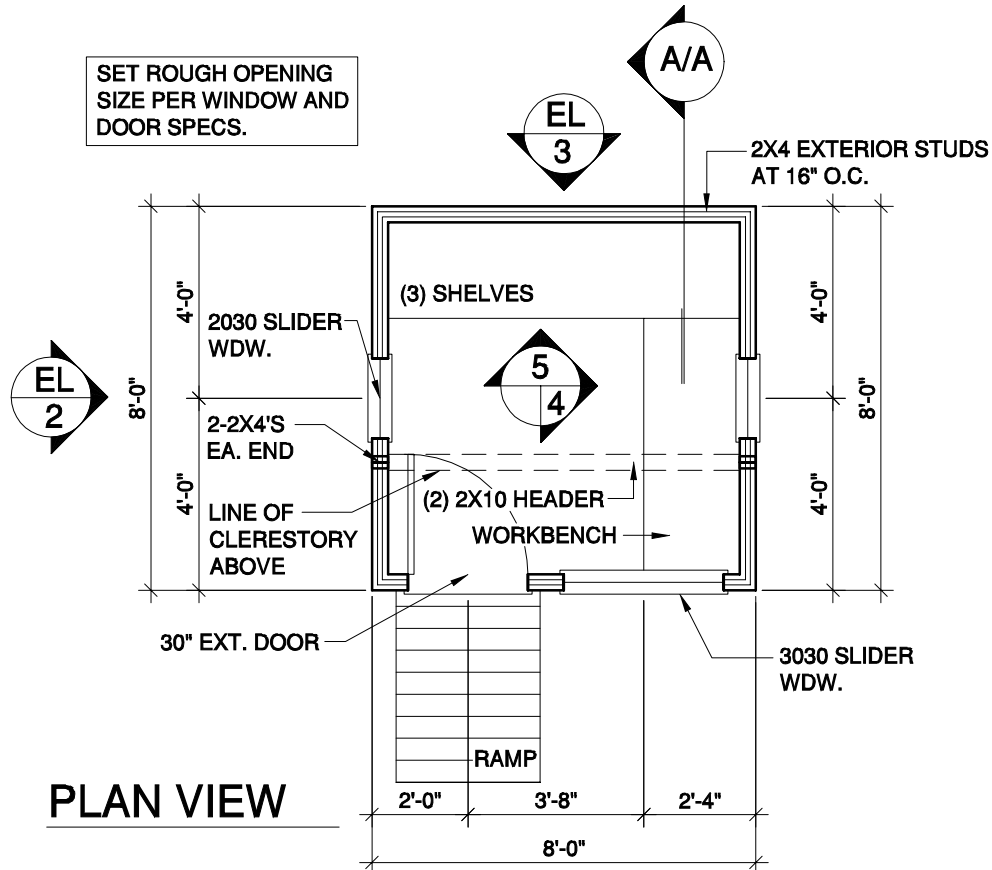
Rendering	1
Plan View and Pier Layout	2
Framing Plan, Elevation, Details	3
Elevation and Details	4
Elevation and Rafter Details	5
Section	6
Workbench and Shelving Layout	7
Material List	8
Disclaimer	9

Visit us at www.homeplans.com to see the world's largest collection of home plans and related products, including more yard and garden projects like this one!



Need extra space for potting plants and storing garden tools? The gardener in your family will truly enjoy having his own space in this attractive gardening shed. Three operable windows and fixed clerestory windows above let in plenty of light. A built-in bench and three shelves keep your storage items organized and off the floor.

Dimensions for this potting shed are 8' X 8'.



BATTERBOARD ELEVATION (TEMPORARY)

4X6 TRTD. BEAM ON
10" DIA. CONC. PIER

CROSS MEASURE FRAMING
TO MAINTAIN SQUARE
SHED FLOOR AREA

2X6 STAGGERED BLOCKING

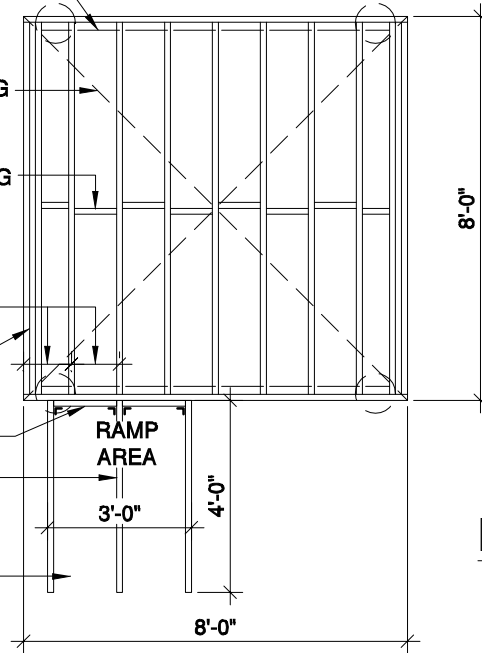
2X6 TRTD. SHED JOISTS
AT 12" O.C. TYPICAL -
SECURED TO BEAM WITH
2-16d NAILS TOENAILED

TRIPLE 2X6
END JOIST

2X4 NAILER

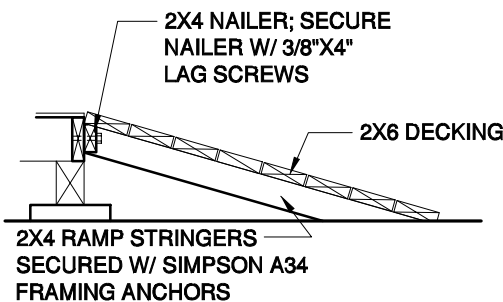
(3) 2X4 RAMP STRINGERS
SECURED W/ SIMPSON A34
FRAMING ANCHORS

CTR. RAMP
ON DOOR



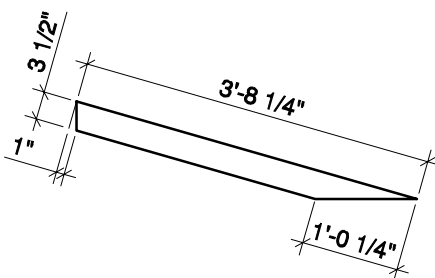
FRAMING PLAN

SCALE: 1/4" = 1'-0"



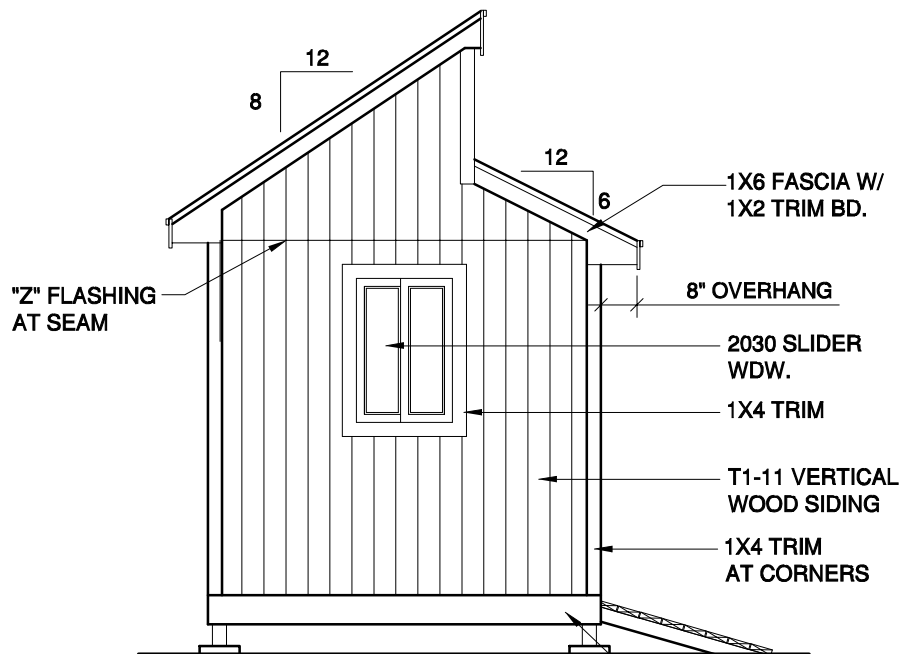
RAMP DETAIL

SCALE: 1/2" = 1'-0"



RAMP STRINGER

SCALE: 1/2" = 1'-0"

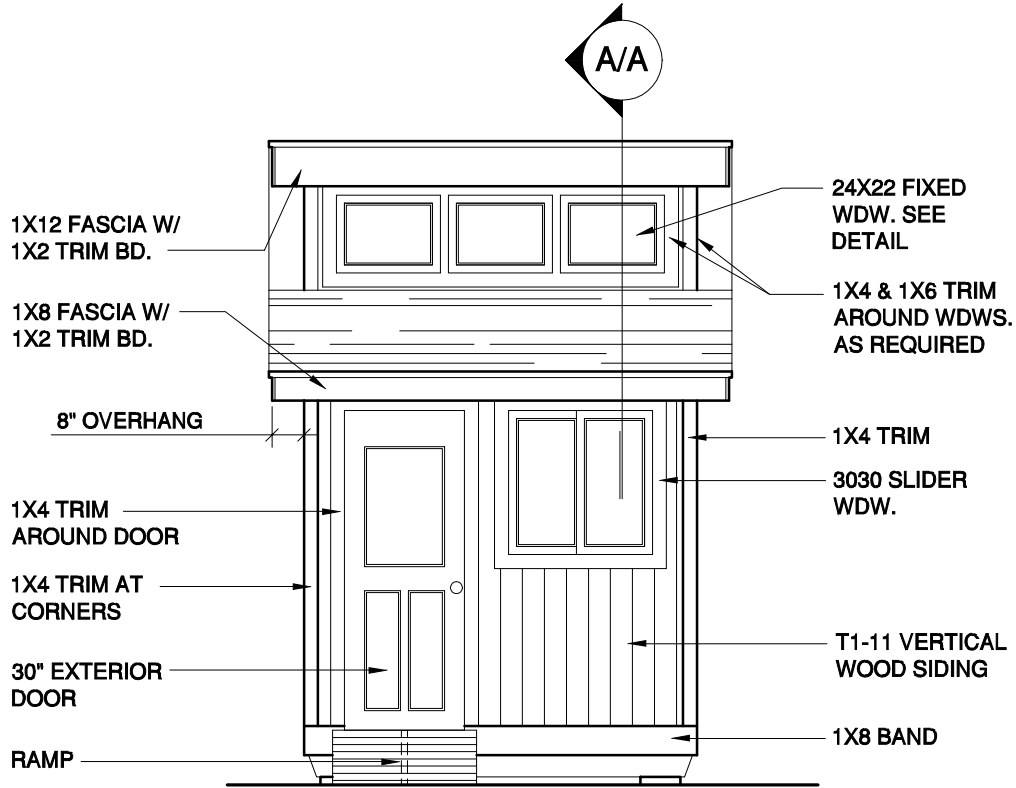


EL LEFT ELEVATION

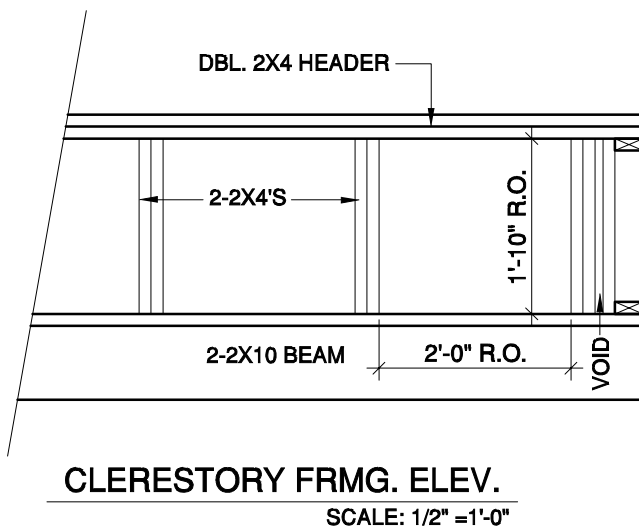
2

RIGHT ELEVATION
REVERSE OF LEFT

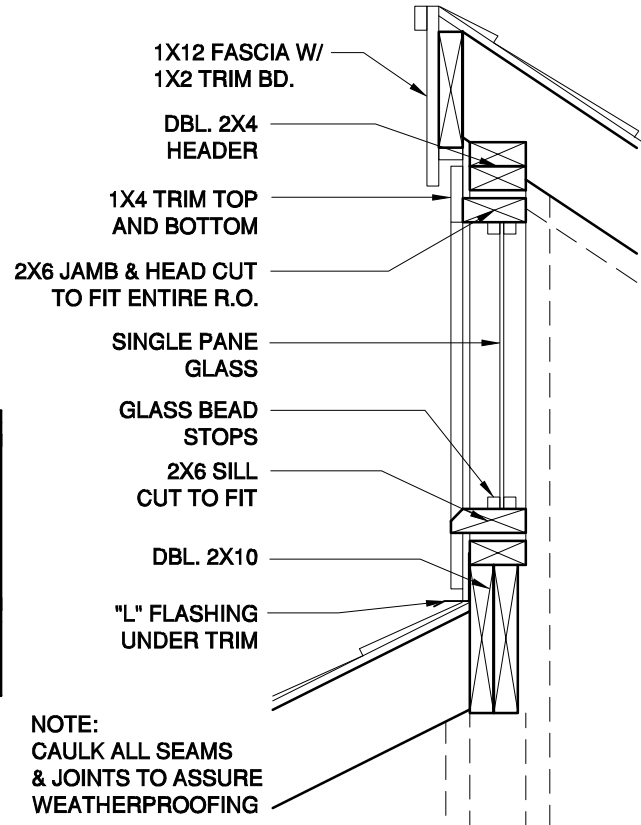
SCALE: 1/4" = 1'-0"



EL 1 FRONT ELEVATION
SCALE: 1/4" = 1'-0"

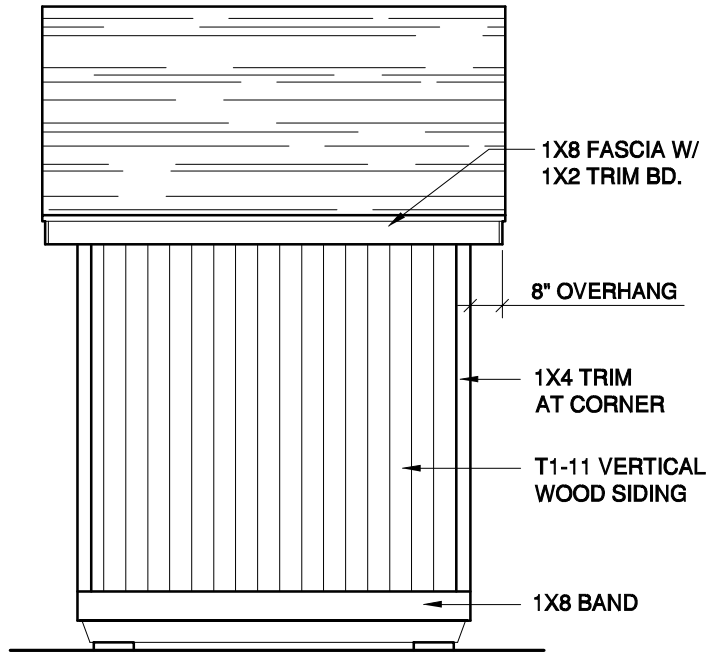


CLERESTORY FRMG. ELEV.
SCALE: 1/2" = 1'-0"



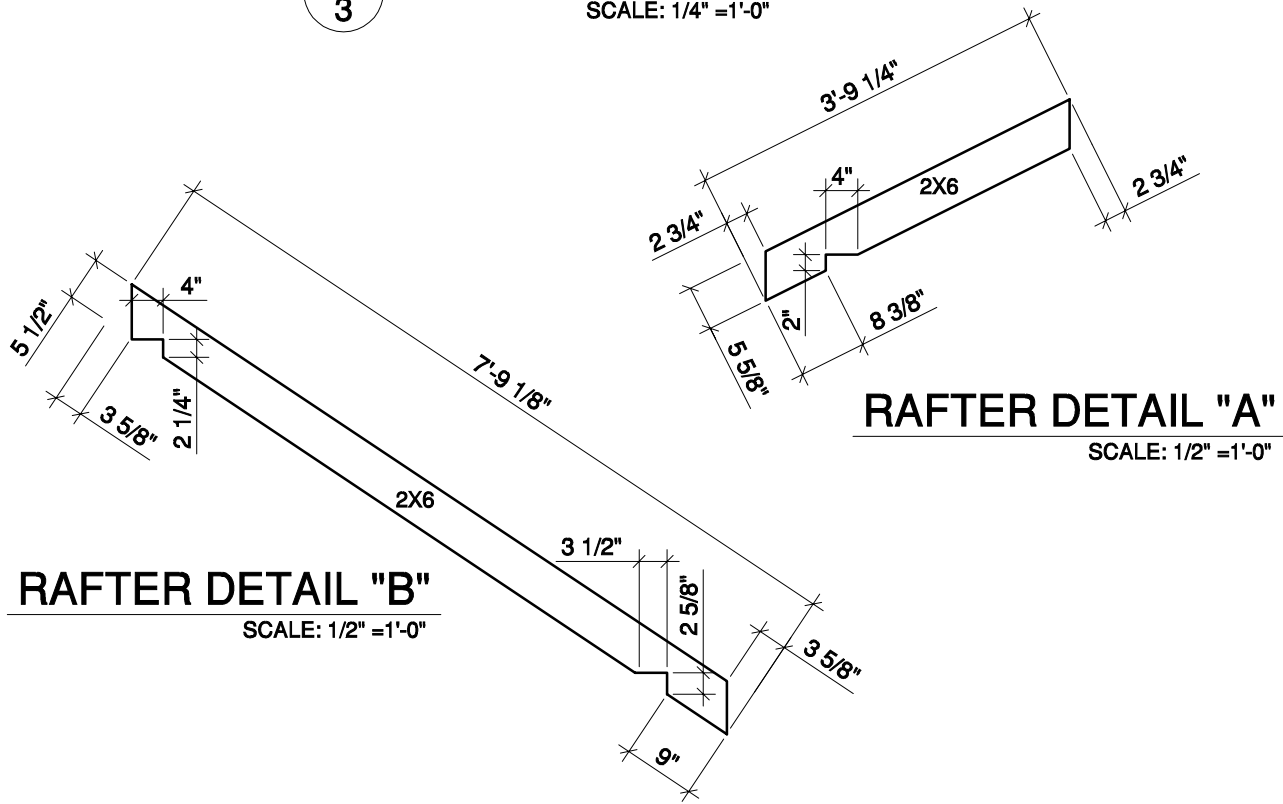
CLERESTORY DETAIL
SCALE: 1" = 1'-0"

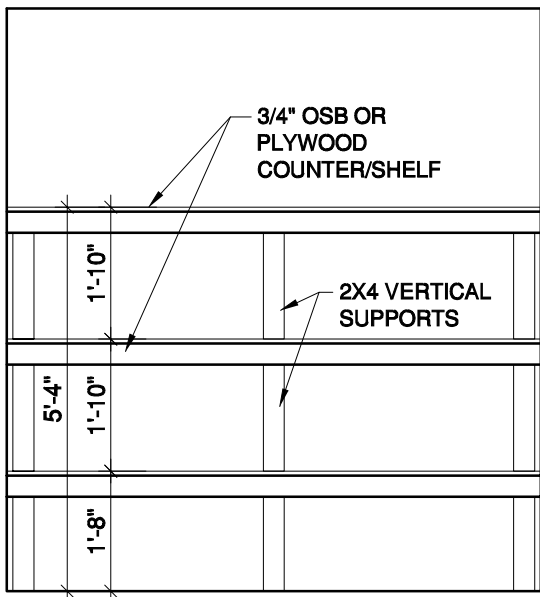
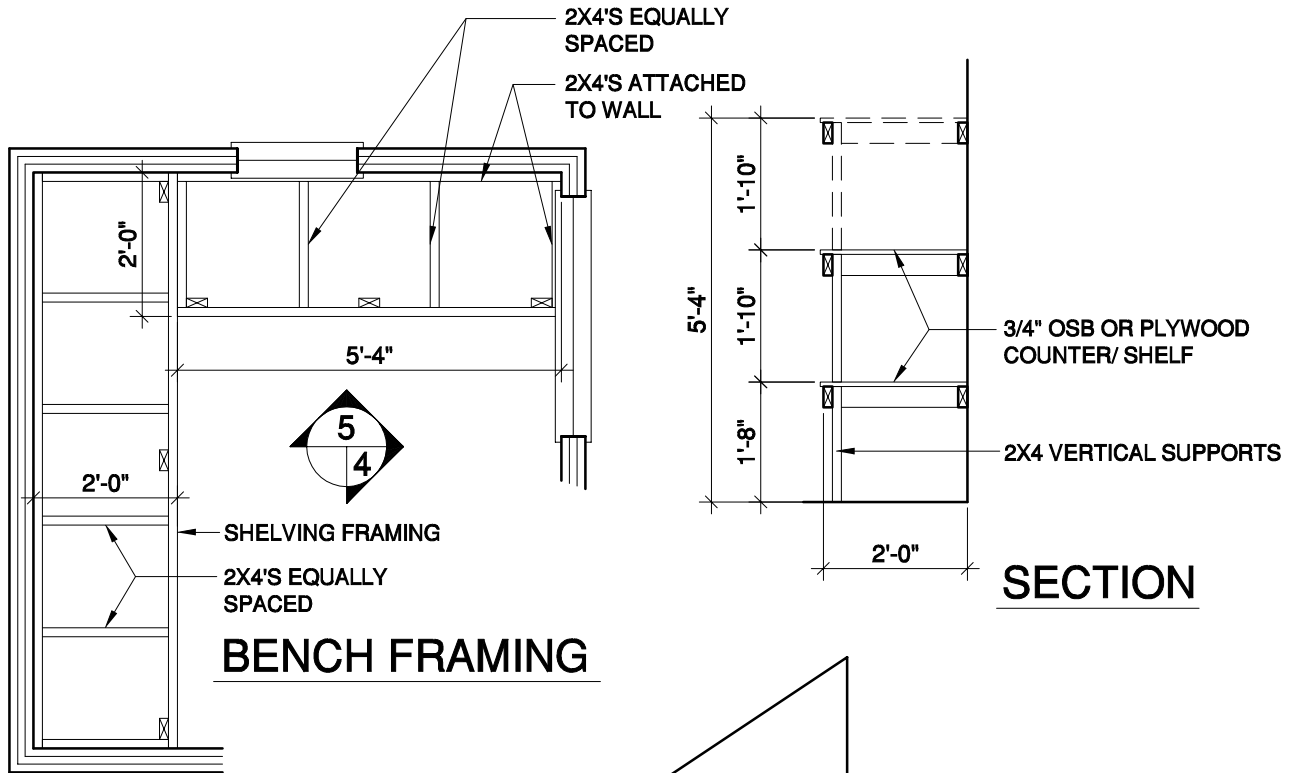
NOTE:
CAULK ALL SEAMS
& JOINTS TO ASSURE
WEATHERPROOFING



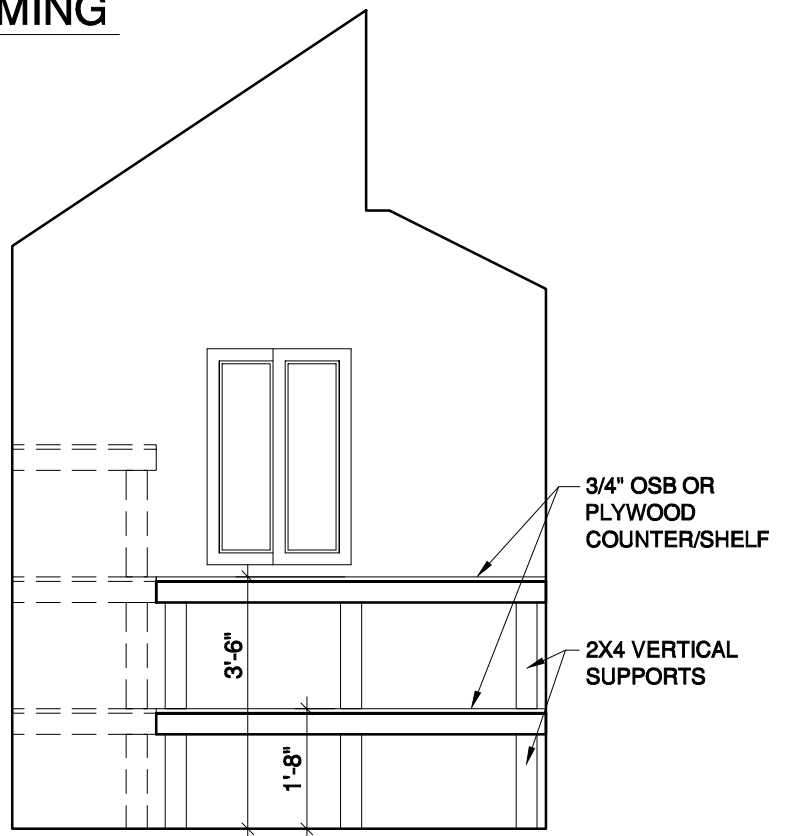
EL 3 REAR ELEVATION

SCALE: 1/4" = 1'-0"





EL 5 **SHELVING ELEVATION**



EL 4 **WORKBENCH ELEVATION**

Everything you'll need to build this project is listed below. Use it as a shopping list when you visit your local home improvement center to purchase your materials.

FOUNDATION

Item	Location	Qty	UM
60# Concrete Mix	Pier	20	BG
10"x48" Fiber Tube	Pier	4	EA
2x4 - 10' Std. & Btr.	Batterboard	5	EA
Post Base (PB44)	Pier	4	EA
1/2" Hex. Hd. Nut	Post Base	8	EA
1/2" x4-1/2" Bolt	Post Base	8	EA
1/2" Washer	Post Base	16	EA
Crushed Gravel	Pier	8	BG

FLOOR

Item	Location	Qty	UM
4x6 - 8' Treated	Beam	2	EA
2x6 - 8' Treated	Floor Joist/Blocking	17	EA
3/4" OSB (Ply.)	Floor Decking	2	EA
Framing Anchor (A34)	Floor Framing	8	EA
2x4 - 8' Treated	Nailer/Stringer	2	EA
2x6 - 12' Treated	Decking	2	EA
3/8"x4" Lag Screws	Ramp Nailer	4	EA
3/8"x1-1/2" Washer	Ramp Nailer	4	EA
5# 16d Galv. Nails	General Framing	1	EA
5# 8d Ctd. Box Nails	General Framing	1	EA
1# 2-1/2" Ctd. Ext. Screws	General Framing	1	EA
Construction Adhesive	Floor Decking	2	TB

WALL FRAMING

Item	Location	Qty	UM
2x4 - 8' Treated	Bottom Plate	4	EA
2x4 - 96" Stud Grade	Wall/Gable/Clerestory	40	EA
2x4 - 96" Stud Grade	Crpl./Sill/Blkg./Plate	14	EA
2x4 - 8' Std. & Btr.	Top/Cap Plate	8	EA
2x4 - 8' Std. & Btr.	Clerestory Plate	3	EA
2x6 - 10' Std. & Btr.	Header	2	EA
2x10 - 8' Std. & Btr.	Header	2	EA
3/8" T1-11 Siding	Wall Sheathing/Siding	10	EA
5# 6d Galv. Nails	General Framing	2	EA
5# 8d Ctd. Box Nails	General Framing	2	EA
1x6 - 10' Std. & Btr.	Bracing	4	EA

CEILING/ROOF

Item	Location	Qty	UM
2x6 - 8' Std. & Btr.	Rafter	12	EA
2x6 - 10' Std. & Btr.	Sub-Fascia	2	EA
2x8 - 10' Std. & Btr.	Sub-Fascia	1	EA
2x4 - 8' Std. & Btr.	Ladder Rake/Blocking	7	EA
2x2 - 8' #2 & Btr. S4S	Soffit Nailer	2	EA
1x4 - 10' #2 & Btr. (Rip-1x2)	Soffit Trim	1	EA
1x6 - 12' #2 & Btr. S4S	Fascia	2	EA
1x8 - 10' #2 & Btr. S4S	Fascia	2	EA
1x12 - 10' #2 & Btr. S4S	Fascia	1	EA
7/16" OSB (Ply.)	Roof Decking	4	EA
3 - Tab Shingle 20 Yr.	Shingle	4	BN
15-lb. Asphalt Rfg. Felt	Roofing	1	RL
"L" Flashing - 10' Roof - Wall	Clerestory	1	EA
5# 8d Ctd. Box Nails	General Framing	2	EA
5# 10d Bright Box Nails	General Framing	2	EA
5# 16d Galv. Nails	General Framing	1	EA
5# 1/2" Roofing Nails	Roofing Felt	1	EA
5# 1-1/4" Roofing Nails	Shingle	2	EA
5# 6d Galv. Box Nails	General Framing	1	EA
5# 6d Galv. Finish Nails	Siding/Soffit	1	EA

EXTERIOR TRIM & ACCESSORIES

Item	Location	Qty	UM
1x2 - 8' Std. & Btr. (Rip-1x1)	Window Stop	3	EA
1x4 - 10' #2 & Btr. (Rip-1x2)	Fascia/Eave	3	EA
1x4 - 10' #2 & Btr. EA	Corner/Dr./Wdw. Trim	9	
1x6 - 8' #2 & Btr.	Window Trim	1	EA
1x 8 - 10' #2 & Btr.	Band Trim	4	EA
1/4" Plywood (Sanded)	Soffit Material	2	EA
2x6 - 8' Std. & Btr.	Window Jamb	3	EA
2x4 - 8' Std. & Btr.	Shelf Frame	22	EA
3/4" OSB (Ply.)	Shelf	3	EA
14"x6" Metal Soffit Vent	Soffit	4	EA
Single Pane Glass (20"x18")	Window	3	EA
30"x80" Exterior Door	Exterior Door	1	EA
2030 Slider Window	Window	2	EA
3030 Slider Window	Window	1	EA
Lockset/Deadbolt	Exterior Door	1	EA
5# 6d Galv. Finish Nails	Siding/Soffit	4	EA
5# 8d Galv. Finish Nails	Window/Door	1	EA
10 oz. - Paintable Caulk	Siding/Trim	6	TB
3/8" - 10' "Z" - Bar Flashing	Horz. Siding Seam	2	EA
4" - 10' "Z" Flashing	Window/Door	2	EA

Building Codes: Variations in building codes, specific local development covenants, or site conditions may require modification to the design of the project plans. You are ultimately responsible for complying with all applicable permit, building codes and other regulatory requirements. Be sure to review the plans with your local building inspector and acquire all appropriate building permits prior to starting your project. The project plans have been designed in accordance with the Uniform Building Code (UBC 1997).

Accuracy: Every effort has been made to prepare a complete set of drawings, instructions and material lists. However, there always exists a possibility for errors or omissions. Therefore, you and/or your building contractor(s) shall assume the responsibility of verifying all conditions and dimensions contained within a project plan prior to the start of construction. Please report any discrepancies to Homestore™ Plans and Publications at (888) 447-1946 for verification and/or correction before proceeding with construction. You and/or your building contractor(s) shall assume responsibility for errors that are not reported. Homestore™ Plans and Publications warranty for errors and omissions is limited to, and may not exceed, the amount of fees collected for the design services related to the purchase of these plans.

Liability: Homestore™ Plans and Publications shall have no liability or responsibility for your action or inaction in connection with any project plan, or for any damage or liability that arises during the construction and/or use of any project or project plan. Always read and observe all of the safety precautions provided by any tool or equipment manufacturer and follow all accepted safety procedures.

Material Lists: Material Lists are based upon the drawings contained in this plan set. Actual quantities may vary based upon actual site conditions.

Enjoy your new potting shed!